

# SmartView Image System

▶ MBE-IMG-CA



**New**



▶ MBE-IMG-CM



**New**



■ The SmartView Image System offers two selections for your convenience and preference. The compact digital camera allows you to take pictures from the camera and stores in the memory card without any hassle. The portable and light design allows you to carry it with ease. The 5MP scientific grade camera provides an excellent image to your laptop through the USB connection whereas the digital camera type offers computer free operation. The SmartView Image System completes the SafeBlue electrophoresis series for all your needs - from gel casting, gel electrophoresis to gel documentation; all in one system. The complete SmartView system not only saves your lab bench space, but also provides excellent portability to move from lab to lab.

▶ **Features**

- Light weight and space saving design
- Ready to use out of the box; just connect and capture
- Two camera types available: choose digital camera or scientific grade camera
- Designed for SafeBlue electrophoresis system to complete cast, run, and capture
- Adaptable to any 21 x 26cm UV transilluminator with optional accessory



▶ Designed for SafeBlue electrophoresis system to complete cast, run, and capture

► Specifications

**SmartView 210 Digital Camera**

Type	5x optional / 4x digital zoom camera
Effective Pixels	Approx. 10.0 megapixel
CCD	1/1.7" type CCD; total pixels 10.4 million pixels
Aperture	f/2.8 (W) ~ f/4.5 (T)
Shutter Speed	15~1/4000 sec.
Filters	Amber filter
Storage Media	Memory card
Computer Interface	USB 2.0 Hi-speed (mini-B jack)
Video Out	NTSC / PAL



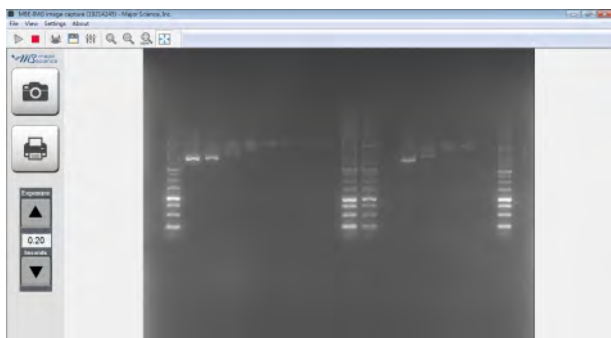
**SmartView 220 Scientific Grade Camera**

Resolution	2592 x 1944 pixels
Pixel Density	10 bit
FPS (Frame Per Second)	5 frames
Sensitivity	1.4V / lux-sec
File Format	BMP, JPEG, TIFF, PNG
Exposure Range	30~0.01 sec.
Focal Length	6mm
Maximum Relative Aperture	F1.2



**PC Requirement:**

- \* Processor: 1.8GHz Pentium® IV or equivalent AMD Athlon® processor
- \* Memory: 512MB required
- \* Storage: 1GB
- \* Media: CD-ROM drive
- \* Connectivity: 1 port USB 2.0
- \* Video: 1280 x 800 resolution
- \* Operating System: Windows® 7 SP1 / Windows® Vista SP1 / Windows® XP SP3
- \* Printer: USB printer or thermal printer (optional)



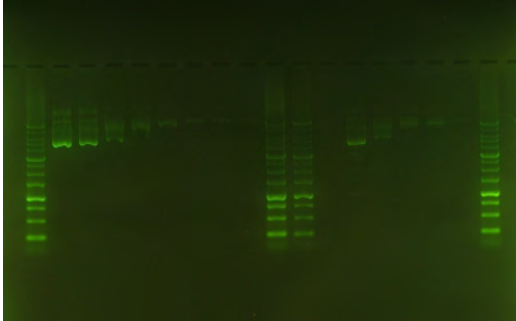
**SmartView Dark Room**

Camera Holder Material	POM (Polyoxymethylene)
Darkroom Material	ABS (Acrylonitrile Butadiene Styrene)
Darkroom Dimensions	W340 x L195 x H400mm
Weight	0.8kg

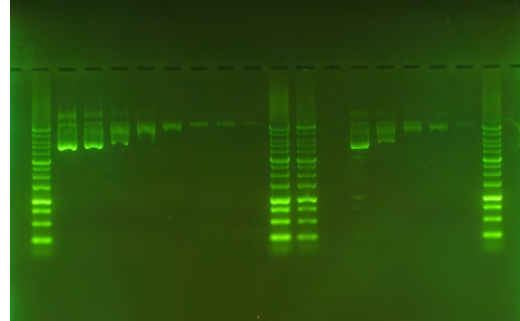


▶ Comparison

SmartView210

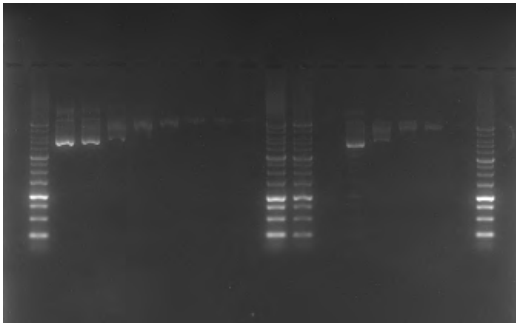


SYBR Gold-F3.5-1s

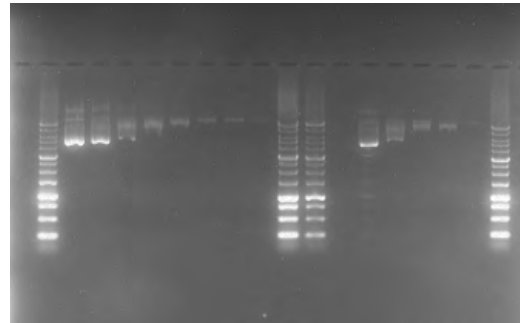


SYBR Gold-F3.5-2s

SmartView220



SYBR Gold-F3.2-1s



SYBR Gold-F3.2-2s

▶ Ordering Information

MBE-IMG-CA	SmartView210 Image System with 10.0 megapixel digital camera and hood kit
MBE-IMG-CM	SmartView220 Image System with 5.0 megapixel scientific grade camera and hood kit
MBE-IMG-CA-01	SmartView210 Hood Kit, includes camera adapter, amber filter, and hood
MBE-IMG-CA-02	SmartView210 Holder Kit, includes camera adapter and amber filter
MBE-IMG-CM-01	SmartView220 Hood Kit, includes camera adapter, amber filter, and hood
MBE-IMG-CM-02	SmartView220 Holder Kit, includes camera adapter and amber filter
MBE-IMG-CM-03	5.0 megapixel scientific grade camera, lens and USB cable
MBE-IMG-F1	SmartView amber filter
MBE-G-Y1	Amber filter viewing glasses
DI-LA	Lens adapter for digital camera
DI-P95DW	Mitsubishi P-95DW thermal printer
DI-UNSCAN-IT	Basic gel analysis software package



▶ MBE-IMG-CA-01



▶ MBE-IMG-CA-02



▶ MBE-IMG-CM-01



▶ MBE-IMG-CM-02



▶ MBE-IMG-CM-03



▶ MBE-IMG-F1



▶ MBE-IMG-G-Y1



▶ DI-LA

### ▶ Bundle Packages

MBE-CP-01	Package of MBE-150-PLUS and MBE-IMG-CA
MBE-CP-02	Package of MBE-150-PLUS and MBE-IMG-CM

\* Please see page 48 for more information of SafeBlue Electrophoresis System (MBE-150-PLUS)



▶ MBE-CP-01



▶ MBE-CP-02