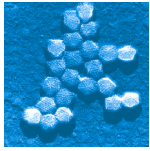


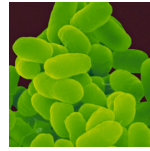
FilmArray[®] Respiratory Panel

1 Test. 20 Targets. All in about an hour.



Viruses

Adenovirus	Influenza A/H1-2009
Coronavirus HKU1	Influenza A/H3
Coronavirus NL63	Influenza B
Coronavirus 229E	Parainfluenza 1
Coronavirus OC43	Parainfluenza 2
Human Metapneumovirus	Parainfluenza 3
Human Rhinovirus/Enterovirus	Parainfluenza 4
Influenza A	Respiratory Syncytial Virus
Influenza A/H1	



Bacteria

Bordetella pertussis
Chlamydomphila pneumoniae
Mycoplasma pneumoniae

20
Targets

Simultaneous Identification of 20 Targets

The FilmArray Respiratory Panel tests for a comprehensive panel of 20 respiratory viruses and bacteria. The FilmArray instrument integrates sample preparation, amplification, detection and analysis into one simple system that requires two minutes of hands-on time and has a total run time of about an hour.

Simple: 2 minutes of hands-on time

Easy: No precise measuring or pipetting required

Fast: Turnaround time of about 1 hour

Comprehensive: 20 target respiratory panel



For In-vitro Diagnostic Use
FDA Cleared | CE-IVD Marked

Panel Specifications

Sample Handling

Sample Type: Nasopharyngeal Swab

Sample Volume: 300 µL

Performance Parameters

Hands-on time: Approximately two minutes

Run time: About an hour

FilmArray®

The fastest way to better results.

How Does the FilmArray Work?

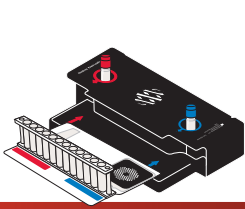
The FilmArray reagent pouch stores all the necessary reagents for sample preparation, reverse transcription, PCR and detection in a freeze-dried format. Prior to a run, the user injects hydration solution and sample combined with sample buffer mix into the pouch. The FilmArray instrument does the rest.

First, the FilmArray extracts and purifies all nucleic acids from the sample.

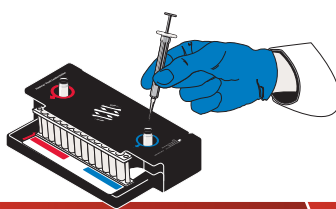
Next, the FilmArray performs a nested multiplex PCR. During the first-stage PCR, the FilmArray performs a single, large volume, massively multiplexed reaction. Last, individual singleplex second-stage PCR reactions detect the products from the first stage PCR.

Using endpoint melting curve data, the FilmArray software automatically generates a result for each target in a single report.

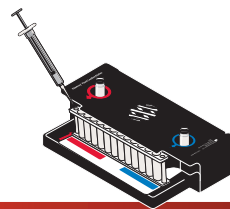
Setting up the FilmArray is easy — a true Load and Go system.



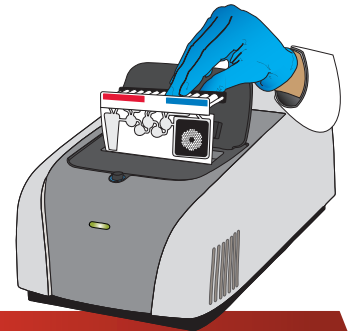
Insert pouch into loading station



Inject Hydration Solution

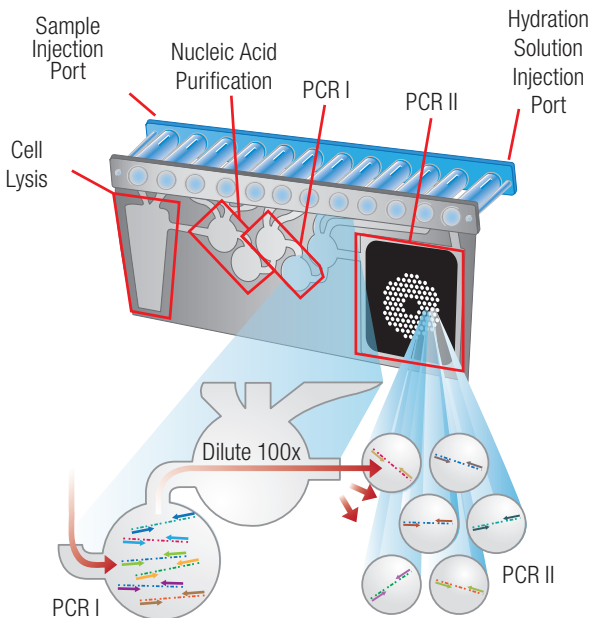


Inject Sample



Insert pouch into the FilmArray and start run

The FilmArray Pouch and Analysis Report



FilmArray™ Respiratory Panel		BIO FIRE	
<small>www.BioFireDx.com</small>			
Run Summary			
Sample ID:	47f316e7	Run Date:	29 Sep 2014 5:17 PM
Detected:	Human Rhinovirus/Enterovirus Bordetella pertussis	Controls:	Passed
Equivocal:	None		
Result Summary			
Not Detected	Adenovirus		
Not Detected	Coronavirus 229E		
Not Detected	Coronavirus HKU1		
Not Detected	Coronavirus NL63		
Not Detected	Coronavirus OC43		
Not Detected	Human Metapneumovirus		
✓ Detected	Human Rhinovirus/Enterovirus		
Not Detected	Influenza A		
Not Detected	Influenza B		
Not Detected	Parainfluenza Virus 1		
Not Detected	Parainfluenza Virus 2		
Not Detected	Parainfluenza Virus 3		
Not Detected	Parainfluenza Virus 4		
Not Detected	Respiratory Syncytial Virus		
✓ Detected	Bordetella pertussis		
Not Detected	Chlamydia pneumoniae		
Not Detected	Mycoplasma pneumoniae		
Run Details			
Pouch:	Respiratory Panel v1.7	Protocol:	NPS v2.0
Run Status:	Completed	Operator:	Amber B (Amber)
Serial No.:	01760680	Instrument:	FA2007
Lot No.:	172114		

The purchase of this product includes a limited, nontransferable license under specific claims of one or more U.S. patents as listed on BioFire Diagnostics' Web site (<http://www.biofiredx.com/LegalNotices/>) and owned by BioFire and the University of Utah Research Foundation. BIOMÉRIEUX, the blue logo, BioFire logo, FilmArray are used, pending and/or registered trademarks belonging to bioMérieux, or one of its subsidiaries, or one of its companies. Any other name or trademark is the property of its respective owner. Document and/or picture not legally binding. Modifications can be made without prior notice. No part of this document may be reproduced or transmitted in any form or by any means, electronic or mechanical, for any purpose, without the express written permission of bioMérieux / BioFire Diagnostics.

bioMérieux S.A.
69280 Marcy l'Etoile
France
Tel.: +33 (0) 4 78 87 20 00
Fax: +33 (0) 4 78 87 20 90

www.biomerieux.fr

Manufactured by:
BioFire Diagnostics, LLC
390 Wakara Way, Salt Lake City,
UT 84108, USA
BioFire is a subsidiary 100% owned by bioMérieux.

www.biofiredx.com

BIO FIRE®
A BIOMÉRIEUX COMPANY

BIOMÉRIEUX